

Straticyte™ by ProteocyteAI

A digitally delivered oral cancer predictor – powered by Visiopharm analysis

Background

Oral squamous cell carcinomas (OSCC) often develops from oral potentially malignant disorders (OPMDs). Mostly due to late diagnosis, the mortality rate of OSSC has been at 50% for decades. The current standard of care for predicting progression from OPMDs consists of dysplasia grading, which shows highly variable behavior across patients and does not relate very well to the risk of developing cancer from the lesion.

Why they used Visiopharm

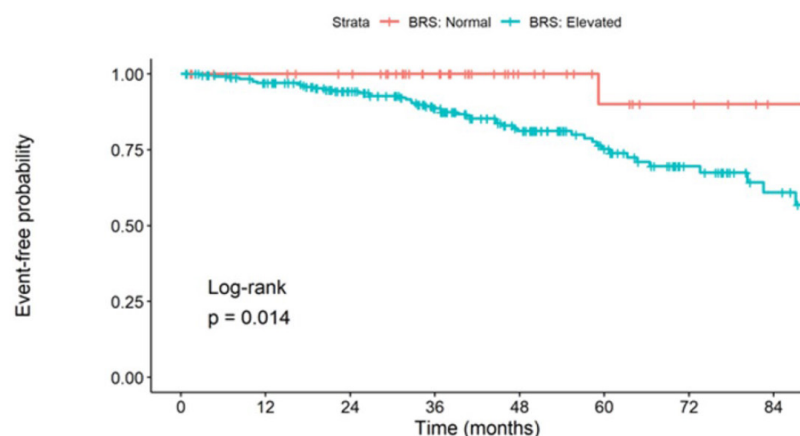
Proteocyte used Visiopharm's software to develop an APP that detects and quantifies S100A7 in the oral lesion sample. The resulting score has a sensitivity and a negative predictive value of 96% respectively. This way, patients can be closely monitored in the future – or send home without worries, depending on their individual progression risk.

Clinical Validation

The team around Jason T. K. Hwang recently published¹ an external clinical validation of the Straticyte test, which is being used in daily practice and is delivering risk scores for several hundred patients already. The addition of the test to current histological techniques should improve early detection rates of OSCC, enhancing the effectiveness of treatment.



Kenneth P.H. Pritzker, M.D.,
Co-founder Proteocyte



96,2%
sensitivity

96,2%
negative predictive value

Kaplan-Meier time-to-cancer transformation and life table of the normal-(red) versus elevated-risk (aqua) classified quantitative biomarker-based risk score

Read the paper [here](#).

Read our blog interview [here](#).