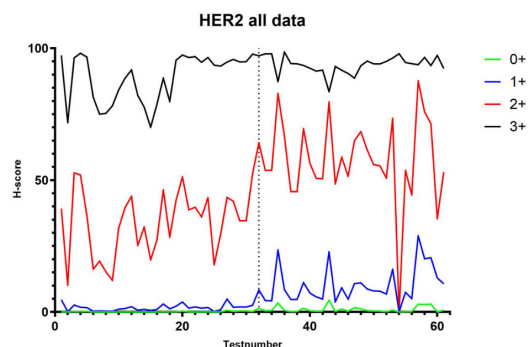


How consistent is your tissue staining? And how certain are you about it?

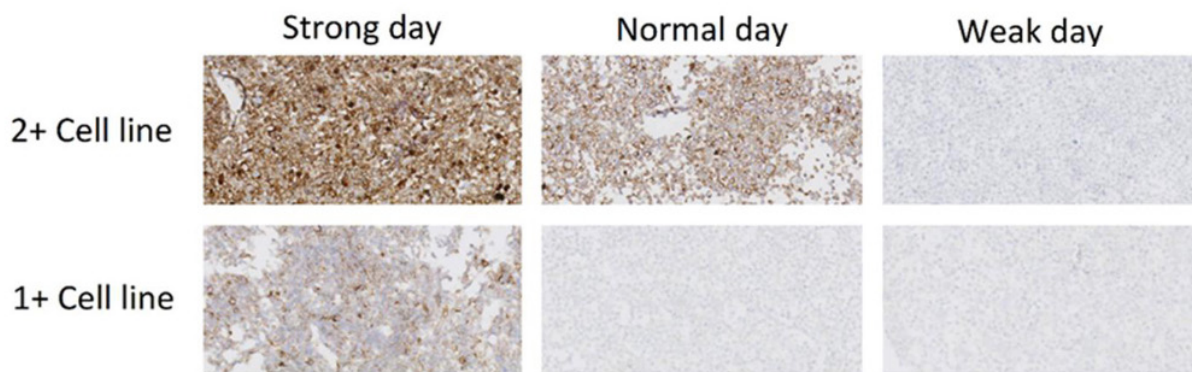
Effective IHC quality assurance with Qualitopix

Kempen et al. (2025) from UMC Utrecht "observed multiple unexpected variations, particularly in low and medium-expressing cell lines" when monitoring their HER2 and PD-L1 stains over a 24 months period with Qualitopix.

Below: Images taken from Qualitopix® analysis of HER2 stained cell lines expressing different protein levels, reflecting different days with "strong, normal and weak" staining intensities. The differences in staining intensities measured by AI for the 1+ and 2+ cores can well be seen. [only core 1+ and 2+ shown here]



Above: Weekly Qualitopix results for HER2 stain intensity on cell line TMAs engineered to express 0, 1+, 2+ or 3+ HER2 protein levels.



Add standardized reference material to selected slides or to all slides with key predictive markers, scan and upload to Qualitopix for quantitative evaluation.

- Trust your staining through AI-driven quantification and monitoring
- Get started easily with a frictionless set up and intuitive workflow
- Be prepared for new demands and regulations

